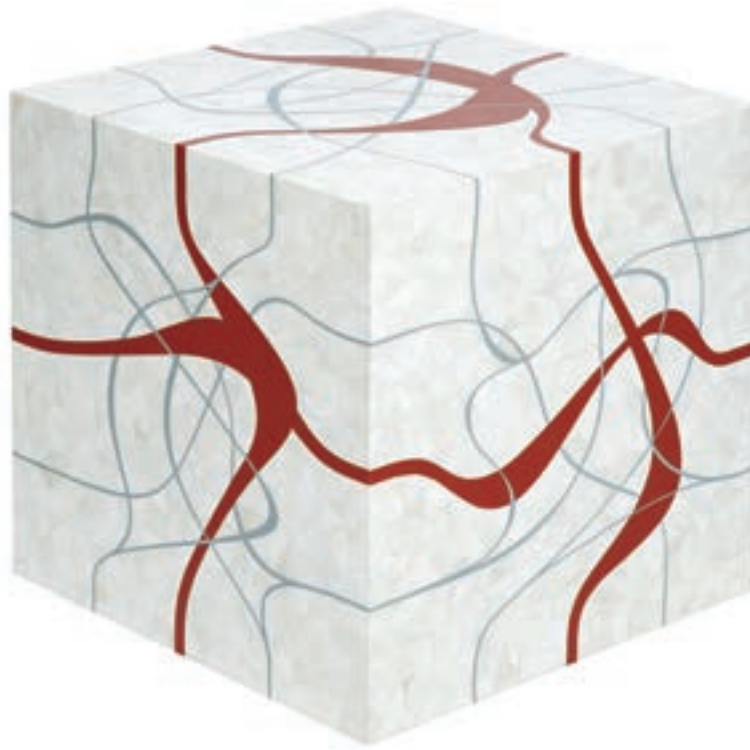


FARRAGO



SAND COLLECTION - DUNE END TABLE (WHITE)

W 16 IN H 16 IN D 16 IN

Inspired by a 3D puzzle, the White Dune Cube Table is made of hundreds of triangular camel bone chips onlayed over wood. The playful patterns made with resin are uniuque on each surface are parametric, but can tie out infinitely with others in arrangements or groups. The cube is cross functional from end table to dining stool to a sculptural grouping.